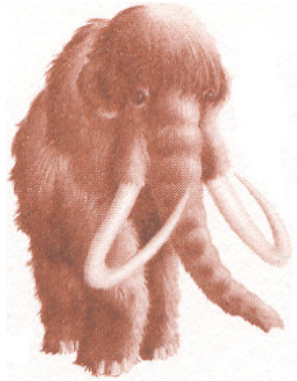


The Langlade Erratic

A newsletter on the Ice Age National Scenic Trail in
Langlade County, Wisconsin
SEPTEMBER, 2017

Published by the Langlade County Chapter of the Ice Age Trail Alliance



"40 YEARS AND COUNTING . . ."

**HI...COME JOIN YOUR TRAIL BUDDIES AT A MEETING
OF THE LANGLADE COUNTY ICE AGE TRAIL CHAPTER.
THURSDAY, SEPTEMBER 21, 2017 - 7 PM
EAU CLAIRE RIVER ROOM (LOWER LEVEL)
LANGLADE COUNTY RESOURCE CENTER**

Future Steps

This summer has been one for thoughtful reading such as On Trails by Robert Moor. The book provides some deep insight on the linear paths we follow and care for. The author follows many trails and shares the thoughts of many people to open a wider view of the linear paths than pure recreation. The author even shares a hiking experience with a good chapter friend, Eb or Nimble Nomad. A refreshing book to read. In the meantime, besides the above chapter meeting, the following future events are offered for your consideration:

The alliance web calendar offers opportunities galore including a ten event series with a woman focus known as "Trailtessa Retreats". Details are available at <http://www.iceagetrail.org/trailtessa-force-of-nature/> Chapters are invited by September 28th to propose a host event by June, 2018, in addition to the six events currently scheduled in three counties.

Saturday, October 7 - 9 AM
Chapter National Trails Day Observance
Hike - Highland Lakes Segment - Bring a lunch. Meet in front of the Forestry Office at the Fairgrounds, Antigo.

Beaver Steps

It has been a few years since beavers worked along our segments. Last year John Prokop, an Oconomowoc hiker, reported beaver activity on the Parrish Hills segment north of Five Cent Road. Gerald Anderson confirmed a new dam on a drainage in which Stanley Koss rerouted upstream in 2001. Until these reports, beaver activity was thought history. After confirming the new beaver activity north of Five Cent Road, Gerald also reported beaver were busy four miles southeast near the Old Truck marker. Of the five segments, Parrish Hills had the most beaver activity at six locations. Besides the recent activity, one was located at the bridged notch a near mile north of Townline Lake. The next beaver dam, 2/3 of a mile east of the Blackberry Ridge reroute near Nelson Firelane, created a flowage but did not hinder human passage as the county used the structure as a base for truckloads of sand and gravel. Another dam existed in a dip of the original trail before it was rerouted over Blackberry Ridge. The last one involved a long confrontation with the dam builders, including a serpentine structure, on Fish Creek just east of the county line. The critters prevailed and the trail was eventually shifted to a short stretch of First Lake Road.

IWA Steps

Last year Lloyd Godell was contacted by his cousin, Marie Fowler, about her group coming to Wisconsin for a little walking on the Ice Age Trail as members of the International Walkers Association (IWA).

The event took place in June with the walkers enjoying bits of the trail here, Marathon and Waupaca Counties.

Our hike involved a 3 plus mile loop of the Summit Lake Moraine from the chalet via Baker Lake to the ski hill crest for a thrilling downhill walk to the chalet.

Several chapter members helped make the event possible. Don Belanger scouted the area to identify a stretch for the group to follow. Lee Auner scouted and then mowed the stretch days before the group arrived at the Kettlebowl Ski Area. Lee also led the hike with Lloyd and Barb's youngest son, Mike, serving as sweep accompanied by Baker Branson. Baker was instrumental a few days earlier in getting the chalet in shape for the visitors and a visual program on the area's glacial geology presented by Dave Mickelson. Then there were the baked treats and cold bottles of water the group enjoyed with their lunches before Dave's informative program. Responsible for the treats and the cool water were Polly Blazek, Barb and Lloyd Godell and Peg Jopek.

With the forecast of an approaching storm, the schedule was switched to complete the hike before the rain fell. The group enjoyed their lunches and treats in the comforting shelter of the chalet made available by the Langlade County Ski Club. Dave Mickelson presented an enlightening program on the trail and how the impressive north face of the Summit Lake Moraine alias the ski hill was formed by an ancient ice sheet.

Post event comments from the group were that the chapter's hosting was appreciated by all. Some IWA members from Kentucky were even delighted to experience some real terrain like "back home".

Then the rain fell but there was a solace that all things went well. For that, a big thanks to Lloyd, Barb, Mike, Baker, Dave, Don, Lee, Peg, Polly and the Langlade County Ski Club.

Bylaw Steps

Forty plus years ago a few local groups known as chapters evolved to give attention to a 500 (at that time) mile hiking trail. The Ice Age Park and Trail Foundation was the sole formal state organization giving the trail any identity in achieving this notable goal.

Beyond that, resources were limited to the personal commitment and initiative of foundation leaders, chapter members along with some gentle prodding by Congressman Henry Reuss' office.

Chapter bylaws were proposed by an informal federation of chapter leaders who met sporadically throughout the state. Bylaws were suggested to provide a governance and operational structure to the local groups. Each chapter then developed and adopted bylaws for their respective local unit.

In the late 80's the informal federation of chapters became formal as a state non-profit membership corporation known as the Ice Age Trail Council. In the eighties, the Ice Age Trail also gained its national and state scenic trail designations.

In 1990, the council merged with the Ice Age Park and Trail Foundation to eventually become the Ice Age Trail Alliance in 2009. Since its merger, the state trail organization has amended its corporate non-profit bylaws to provide more oversight on chapter activity so the need for the local group bylaws diminished over the years.

At the 2017 Annual Membership Meeting of the alliance, the corporate bylaws were amended to include the following provisions affecting chapter governance/activity:

- 1) Chapter members are defined as only the current members of the alliance.
- 2) Current alliance members not affiliated with the chapter (statewide or members of other chapters) may vote at meetings if an officer majority present approves it.
- 3) Chapter bylaws are no longer required as Section 17, Article II of the alliance's bylaws will govern chapter activity. However, the amended bylaw does allow submittal of operational guidelines for a compliance review by the alliance's ED before final approval by the chapter.