

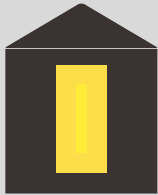
Ice Age Trail Bingo



HOW MANY TRAIL EXPERIENCES CAN YOU GET?

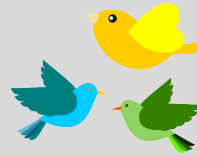
Keep track of your experiences while hiking on the Ice Age Trail. Get four in a row vertically, horizontally, or diagonally to complete this activity. If you want an extra challenge, try to get all of the squares!

Find a
Yellow Blaze



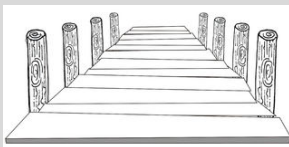
Spot an animal
smaller than you.
What is it? What
does it look like?

Listen to the sounds
of a bird. Do you see
it? What color is it?



Find a:
Pinecone
Acorn
Mushroom
Feather

Hike on a
board walk.



Find an animal
track print.



Write a three words
that describe your
hike:

Listen to running
water.



Spot Wisconsin's
state tree, the Sugar
Maple.



Meet a volunteer!
Find someone
building and
maintaining the Trail.

Find a picture of
Monty on the Trail.



Spend five minutes
sitting and listening
to nature.

High five another
hiker!

Smell a flower.



Find a bench and
take a group photo.
Share it!
#IceAgeTrail
#IATA

Pick up a piece of
litter, and throw
out in the trash or
recycling.





EXTRA CHALLENGE

Did you dominate the Ice Age Trail Bingo already? Show off your creativity by writing your own ideas in each square below. Then see if you can get bingo again!
