



# The Langlade Erratic

A newsletter on the Ice Age National Scenic Trail in  
Langlade County, Wisconsin  
March, 2020

Published by the Langlade County Chapter of the Ice Age Trail Alliance

## "47 YEARS AND COUNTING . . ."

HI...COME JOIN YOUR TRAIL BUDDIES AT THE MEETING  
OF THE LANGLADE COUNTY ICE AGE TRAIL CHAPTER.

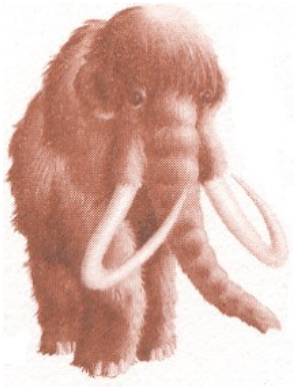
TUESDAY, MARCH 10, 2020 - 7 PM

WOLF RIVER ROOM

LANGLADE COUNTY RESOURCE CENTER

837 CLERMONT STREET, ANTIGO

HOPE YOU CAN ATTEND ALONG WITH A FRIEND OR MORE.



## Future Steps

Winter has been kind so far. On a recent trip to Wausau we noticed fewer ice fishing shacks than usual on the flowage and closer to shore. Not to deny the ice fishing crowd their pursuits but the moderate daytime temps have been much appreciated. Spring is coming and some trail events, including the above meeting, will soon be upon us.

Thursday thru Sunday April 23-26.

Ice Age Trail Alliance Annual Meeting and Conference-Holiday Inn Hotel @-Stevens Point. Registration ends April 3

Saturday, April 25 @ 9 AM

Chapter Early Spring Hike - Bring a lunch. Meet in front of the Forestry Office, Fairgrounds.

Saturday, September 5 @ 9 AM

Late Summer Hike - Bring a lunch. Meet in front of the Forestry Office, Fairgrounds.

Saturday, October 3 @ 9 AM

National Trails Day Hike - Bring a lunch. Meet in front of the Forestry Office, Fairgrounds.

## NPS Steps

Dan Watson, Volunteer Coordinator for the National Park Service, was at the October 3rd chapter meeting. Sometime ago Dan participated in a 2-day operational leadership course offered by the agency to reduce its high accident rate.

Upon completing the course Dan modified what he learned at the 2-day session to a 3-hour online Trail Safe program for trail volunteers. With the online availability at <https://www.nps.gov/iatr/trail-safe.htm> he encourages more volunteers to take the program to broaden their awareness in establishing a positive safe work setting. VIP reporting was another topic discussed. The National Park Service offers grants for staff to submit proposals. The complete and extensive VIP reporting by volunteers greatly enhances the competitiveness of a proposal to be approved for the special funding. He reviewed the current status of injury report forms, the need to have updated versions and the process to be followed. Dan emphasized the importance in reporting "near misses". He then reviewed the volunteer reporting of scouts on projects. Much appreciation to Dan for joining us.

## Chainsaw Steps

Currently trail volunteers must be certified for chainsaw operation on the Ice Age National Scenic Trail. The certification has been attained by volunteers successfully completing the Chainsaw/CPR Course held each year at the alliance's IATU (Ice Age Trail University).

The alliance was notified by the National Park Service that the federal agency will implement a new chainsaw safety training standard by this April. The new standard is known as the National Chainsaw Safety Program (NCSP). The standard will apply to all units in the National Park Service.

The policy is viewed as challenging in attaining compliance by long distance trail groups with many volunteers like the Ice Age Trail Alliance and the North Country Trail Association.

Where it goes from here is dependent on the ongoing consultation and discussions between the many parties affected by the new training standard.

## Rally Steps

November was the month of regional trail rallies. The one held for chapters in this area was at the Hatley Public Library.

John Barker and I joined Brian and Melinda Nelson from Arbutus Lake to represent the chapter. Mike Wollmer was there and after the chapters shared their activities, he presented several items. The chainsaw policy was one and a \$100,000 grant awarded from the National Park Foundation to the alliance for getting 10,000 4<sup>th</sup> graders on the Ice Age Trail in 2019 and 2020.

The specially funded project is known as "Think Outside". The alliance is looking for volunteers interested in leading hikes with teachers and students for one-day field experiences on the trail.

There is also a need for volunteers to help with pre-hike classroom presentations. Hikes and presentations occurred last fall with plans to continue the hikes and classroom sessions until this July.

More details are available at

<https://www.iceagetrail.org/think-outside/>

## Moraine Steps

In the last edition of the chapter newsletter, it was reported that the initial effort to provide access and a parking area at the Moraine-Outwash Preserve would occur sometime late last year. Regrettably the contractor was involved in a major project with some complications and was unable to initiate work at the alliance's property east of Antigo. Hopefully this spring things may happen.

On another morainal note, the re-routed Old Railroad segment has a new name. It is now known as the Summit Moraine Segment. When the original nine-mile segment was established in the mid-70s, half of it traversed the historic rail grade connecting Camp 23 and Pearson with the mainline at Koepenick, thus the former name. In the late 80s, the Camp 23 grade portion was abandoned due to ATV trail development so the stretch of Lumbercamp between County Highways S and A was used to connect with Veterans Memorial Park and the old grade to the west. In 2008, another short stretch of the grade was abandoned as trail when the Clearwater Camp girls from Minocqua and chapter volunteers provided an off-road alternative for users to avoid hiking the Jack Lake Fire Lane.

Then in 2015, an ATV route was proposed to displace the forest lanes used by the Ice Age Trail north of County A and the last stretch of rail grade west of Veterans Memorial Park. The Summit Lake Moraine is a prominent glacial landform in the county. The Kettlebowl, Lumbercamp and Summit Moraine segments traverses portions of the Summit Lake recessional moraine. The moraine was formed by deposition of glacial drift in subsequent ice advances after slowly melting north from the terminal moraine. It was thought naming the re-routed segment would give the prominent feature an identity for telling the glacial story of the county. The moraine includes some of the county's most rugged sections. Three of the county's five trail segments are closer to the Summit Lake Moraine than the distinctive Parrish and Green Bay terminal moraines to the south.