


Fern Glen Segment and Lodi Segment (Atlas Maps 62f, 63f)

SNAPSHOT

 **Fern Glen Segment—1.3 miles:** CTH-J to Bilkey Rd.



No reliable sources of water.



Dogs must be leashed (8-ft max) and under control at all times.



Segment is closed during gun deer season.



A short spur trail to “Susie’s Rock”

 **Lodi Segment—2.2 miles:** Lodi School Complex to Corner St. (STH-113)



At town public buildings. Restrooms also available at Goeres Park.



Hikers will not have any interaction with hunting on this segment.



From Spring Creek.



Dogs must be leashed (8-ft max) and under control at all times.



At private campground.



Most of the segment follows city roads and sidewalks.



At Strangeway Playlot and Veterans Memorial Park and at nearby Goeres Park and Pool (175 Fair St.).



Portions of this segment may be suitable for those using wheelchairs or similar devices.

TRAIL ACCESS AND PARKING

- 1 CTH-J Trail Access (43.32934, -89.57975):** From Lodi at the intersection of STH-113 and STH-60, take STH-113 north. At CTH-J turn left and go west 2.0 mi. **Parking:** Adjacent to Trail Access.
- 2 Bilkey Rd. Trail Access (43.32221, -89.56377):** **Parking:** Roadside.
- 3 Lodi School Complex Trail Access (43.31474, -89.54904):** **Parking:** Adjacent to Trail Access.
- 4 Corner St. (STH-113) Trail Access (43.30456, -89.52551):** From Lodi at the intersection of STH-113 and STH-60, take STH-113 south 0.7 mi. **Parking:** Adjacent to Trail Access.

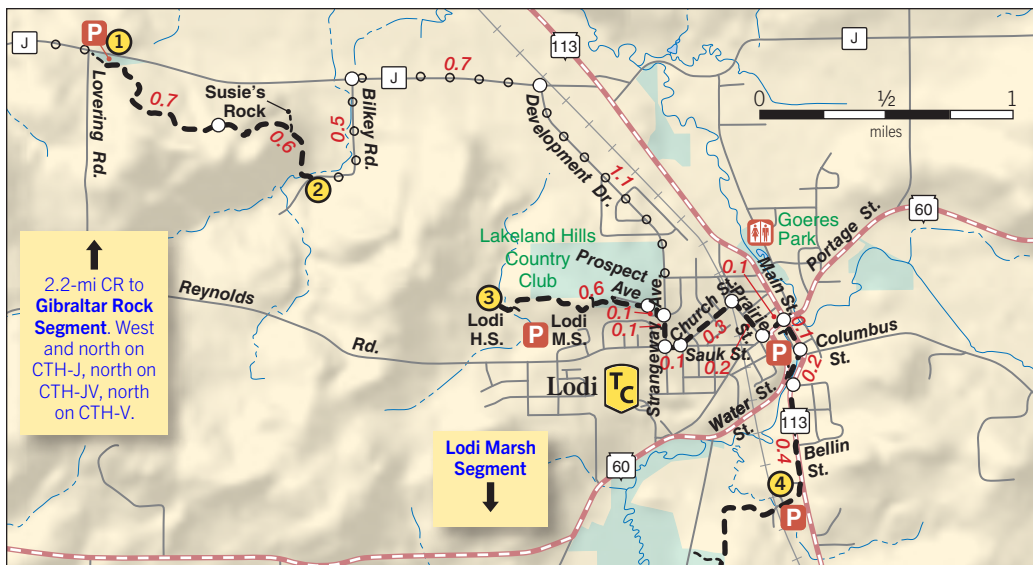
Additional Parking: City of Lodi public parking area on STH-113.

THE HIKE

Fern Glen Segment

This segment is in an area of rounded hills covered with a thin layer of glacial till supporting fields and woods. As it travels, the Trail skirts around a drumlin’s north side, passes through a dense hardwood forest, and climbs up and down a steep ravine. Several species of ferns and spring ephemerals highlight the segment. Be wary of poison ivy and wild parsnip.

From the Trail access at the CTH-J parking area, you’ll begin a steady climb up a steep hill. At the top is a bench near a beautiful oak tree. The bench’s plaque recognizes the Groves family’s Fern Glen Farm and the conservation easement protecting 436 acres and several miles of Ice Age Trail. Then, begin a steep descent until you reach a blue-blazed spur trail leading to “Susie’s Rock,” a favorite spot of Susan Groves (1860–1906) and a place of remembrance for the Groves family. Retrace your steps back to the Trail route. Continue until the terminus at Bilkey Road, crossing a low spot prone to flooding during rainy periods.



From the Bilkey Road Trail access, reach the next segment via the following 2.4-mile connecting route: Hike east and then north on Bilkey Road for 0.5 miles. Turn right and go east on CTH-J for 0.7 miles. Turn right and hike south on Development Drive (which turns into Strangeway Avenue) for 1.1 miles to the intersection of Strangeway Avenue and Prospect Avenue.

Lodi Segment

This segment features Lodi, a charming Ice Age Trail Community founded in 1846 by Isaac Palmer in the Pleasant Valley Precinct of the Wisconsin Territory. Spring Creek's water power played a part in the town's location, first powering a sawmill and then a grist mill. Spring Creek, a spring-fed brown trout stream, runs from the Lodi Marsh through downtown Lodi and empties into Lake Wisconsin. Since portions of the creek do not freeze during winter, it hosts waterfowl, particularly mallards, leading Lodi to adopt "Susie the Duck" as a mascot.

Note: Hikers interested in hiking just the Lodi Segment may wish to begin their hike at the Lodi School complex.

From the Trail access at the intersection of Strangeway Avenue and Prospect Avenue, hike an out-and-back stretch of Ice Age Trail to the west of Strangeway Avenue. Head west on Prospect Avenue to Strangeway Playlot, where you'll leave the pavement. Follow blazed posts through the playlot, across Prospect Avenue, and into the woods paralleling Lodi Golf Club.

Pass prairie restoration efforts behind Lodi Middle School before crossing a 150-foot-long footbridge spanning a ravine between Lodi's middle and high schools. Ron Wolf, a U.S. Forest Products Lab forester and Lodi Valley Chapter member, designed the structure, which is based on the 16th-century Chinese Rainbow Bridge. The twin arches, decking, and railing are constructed of black locust and demonstrate the economical use of small-diameter invasive species.

From the bridge's western end, continue a short distance to the end-of-segment sign at the Lodi School complex. Then backtrack to Strangeway Avenue and resume hiking the remainder of the Lodi Segment.

From the intersection of Prospect Avenue and Strangeway Avenue, hike south on Strangeway Avenue. You'll find a well-marked yellow-blazed route through town. Turn left and go east on Sauk Street. Turn left and go northeast on Church Street. Turn right and go southeast on Prairie Street. Turn left and go northeast on Lodi Street (STH-60). Turn right and go southeast on Main Street (STH-113).

At Doctor's Park, depart Main Street and turn southwest, passing through the park and by a six-sided Ice Age Trail kiosk, then onto a footbridge over Spring Creek. Follow a grassy path southward along the creek through Veterans Memorial Park. Turn southeast and recross Spring Creek on the Pleasant Street road bridge.

Just after the bridge, Pleasant Street meets Corner Street (STH-113). Head south on a sidewalk on the east side of Corner Street. As you leave town, carefully cross to the west side of Corner Street (STH-113) and continue beside the street on a path. Reach the end of the segment at a parking area on the west side of the highway.

AREA SERVICES



Lodi: Restaurant, grocery store, convenience store, lodging, camping, library, medical service. On Trail. Services along Main St. or on STH-60 and STH-113. For area info contact the Lodi and Lake Wisconsin Chamber of Commerce (608-592-4412, lodilakewisconsin.org).



JANET WOOD

Lodi Segment: A hiker enjoys the view from the Rainbow Bridge.