



Together with the Ice Age Trail Alliance, Ice Age Trail Communities enhance appreciation and awareness of the natural and scenic beauty of the thousand-mile Ice Age National Scenic Trail. Visit our Trail Communities to enjoy small-town hospitality, local supper clubs, hometown bakeries, farm-to-table eateries, and sites highlighting Wisconsin's cultural heritage.

For current trail conditions, to connect with local volunteers, or to plan your Ice Age Trail hike, visit iceagetrail.org

Located in northeastern Taylor County, the **Village of Rib Lake** rests on the rolling landscape of the Perkinstown terminal moraine, the edge of the last glacier. Rib Lake began as a lumber mill town where from the 1880s to 1948, it was home to the largest sawmill in the state. Rib Lake, a 320-acre lake and the Village's namesake, provides excellent fishing thanks to the Rib Lake Fish & Game stocking efforts!

WHERE TO HIKE

Please note, Rib Lake is located just south of the Ice Age Trail in Taylor County. Dogs should be leashed (8-foot max) and under control at all times.

EAST LAKE SEGMENT

(6.5 miles)

This remote, hilly segment highlights Northwoods beauty: a scenic hemlock grove hosting the headwaters of the Black River, East Lake – a classic kettle lake – and dramatic, high-relief hummocky terrain. You'll notice erratics of various sizes, shapes, and colors scattered across Moose Mountain which also offers views of the surrounding area, especially during leaf-off season.



WOOD LAKE SEGMENT

(13.4 miles)

This wild, remote segment highlights scenic Gus Johnson Creek, Wood Lake, wetlands and historic logging camp sites. The region provides welcoming habitat for deer, black bear, wolf, grouse and coyote, while the area's wetlands and lakes are home to eagles, sandhill cranes, loons, and beaver. For a shorter hike, the scenic 3.6-mile Wood Lake Loop Trail offers 15 interpretive signs identifying geological features and historical sites describing the area's early logging history.

RIB LAKE SEGMENT

(5.5 miles, 2.7 Ice Age Trail and 2.8 connecting route)

This segment's lengthy road walk is balanced by the wooded, off-road section highlighting a steep-sided esker and several picturesque streams and lakes. Stay tuned – the Ice Age Trail Alliance is currently building four miles of brand-new Ice Age Trail along this segment. It's slated to open by the end of 2023.

EATS & TREATS

No matter what your appetite, find tasty, local fare at Rib Lake's eateries. Start your adventure with an espresso and pastry at [Java Journey](#), a full-service coffee shop in the heart of the Northwoods. Or, settle in like a local at the [Northside Café](#) and ask for a Northside Stacker. [Mann Made Pizza and Ice Cream](#) serves up hot slices and cool scoops! Finally, enjoy classic American favorites – broasted chicken and hand-muddled Old Fashioneds – in a logging-inspired atmosphere at [Camp 28 Bar & Grill](#). Or check out [Bird's Nest](#) for a cold beer and a Wisconsin fish fry.



RECREATION & RELAXATION

From biking to camping, you will find it in Rib Lake and Taylor County. Thanks to Rib Lake Fish & Game stocking efforts, Rib Lake provides excellent fishing. If you stay during a rainy spell, you can while away the hours at [Hanke's Little Bohemia](#).

There are approximately 65 miles of Ice Age Trail winding through Taylor County. Stop by the [Rib Lake Public Library](#) and check out the [Ice Age Trail Explorer Backpack](#)! This backpack contains Wisconsin wildlife identification guides, binoculars, a magnifying glass, and a copy of the Ice Age Trail Guidebook and Atlas.

Head to [Timm's Hill County Park](#) for fishing and hiking. At 1,951 feet above sea level, Timm's Hill is the highest point in Wisconsin. Additional trails offer nine miles of paths that connect to the Ice Age Trail and Rib Lake trails.

The Taylor County Forest offers campsites near small lakes. Hikers will find camping, vault toilets, picnic tables, fire pits, boat landing, and hand pump well at [Wood Lake](#) and [Camp 8](#) campgrounds.

To learn more and plan your visit to Rib Lake, check out their website, <https://www.riblakewisconsin.com/>

SHOPS & STOPS

Shopping is NOT a sport in Rib Lake. [Personalized Treasures](#) is the only spot offering specialty gift items. Instead, shops offer necessities supporting daily activities. Restock groceries or pick up odds and ends you forgot at these businesses:

- [Rib Lake True Value](#)
- [C&G Mini Mart Mobile Station](#)
- [Dollar General](#)
- [Rib Lake Cenex](#)

STAY & PLAY

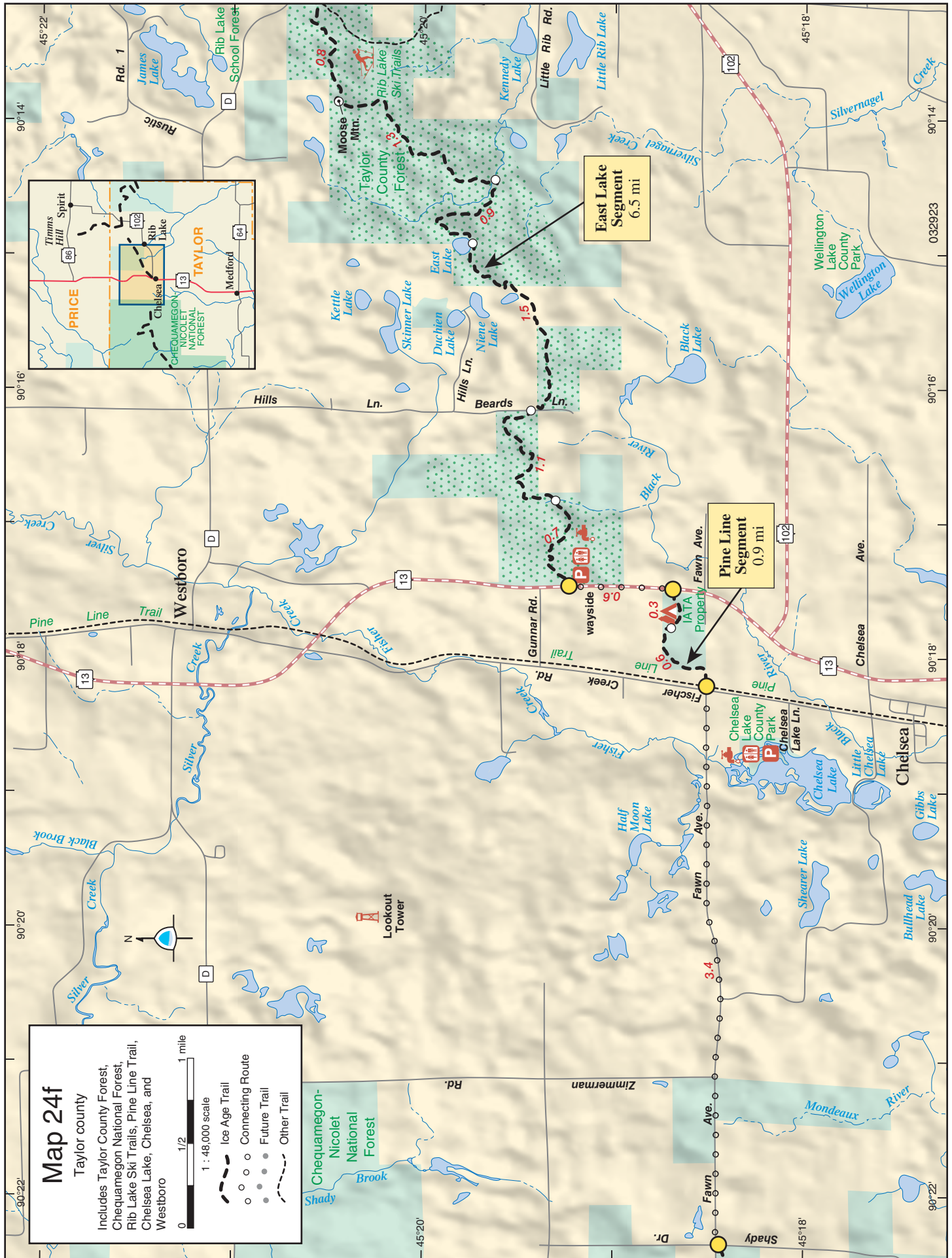
There are plenty of places around Rib Lake to rest. [Rib Waters Inn](#), a motel, also offers a cottage with a full kitchen and living area. [Camp 28 Saloon, Bunkhouse & Cook Shanty](#), is for anyone who appreciates "Up North" style. A comfortable, spacious home-away-from-home [Gasthaus Trailside Lodging](#), is steps away from the Rib Lake Segment of the Ice Age Trail. You'll be surrounded by maples and have a treetop view at [Toad Hollow Loft](#).

If sleeping under the stars is for you, [Pine Island](#) offers sites suited to pitching a tent. You'll need a boat to access the island. Located on a hilltop, [Lakeview Park](#), has 27 sites. Not only do all sites have water and electrical hook-ups, but the park also has toilets, showers, picnic tables, and a nearby boat landing.

GET INVOLVED

Contact the [High Point Chapter](#) of the Ice Age Trail Alliance, a dedicated group of volunteers who build, maintain and promote the beautiful segments of the Ice Age Trail throughout Taylor County.



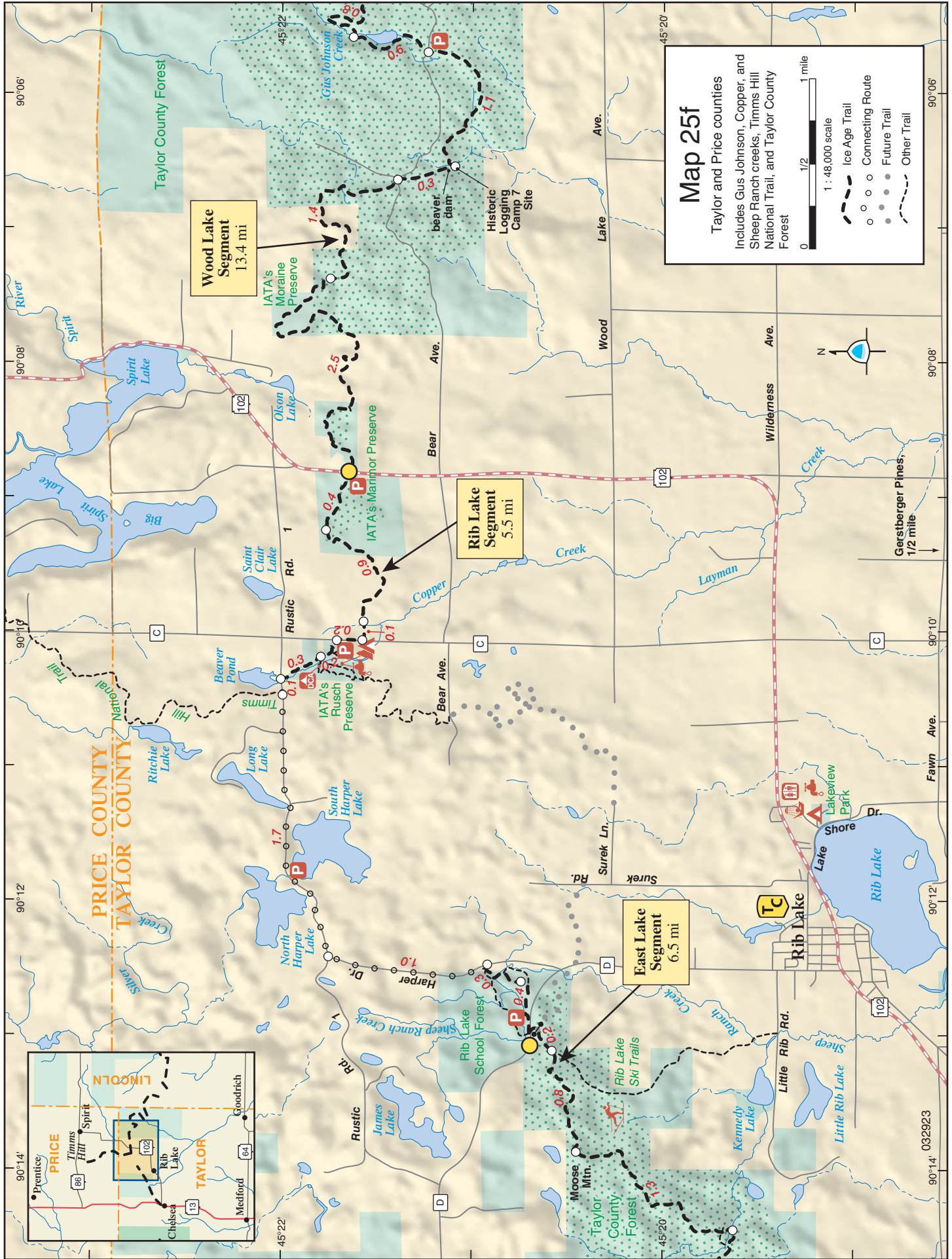


Map 24f
Taylor county

Includes Taylor County Forest, Chequamegon National Forest, Rib Lake Ski Trails, Pine Line Trail, Chelsea Lake, Chelsea, and Westboro

1 : 48,000 scale
0 1/2 1 mile

- Ice Age Trail
- Connecting Route
- Future Trail
- Other Trail



Map 25f

Taylor and Price counties
Includes Gus Johnson, Copper, and Sheep Ranch creeks, Timms Hill National Trail, and Taylor County Forest

1 : 48,000 scale
0 1/2 1 mile

- Ice Age Trail
- Connecting Route
- Future Trail
- Other Trail

