



Together with the Ice Age Trail Alliance, Ice Age Trail Communities enhance appreciation and awareness of the natural and scenic beauty of the thousand-mile Ice Age National Scenic Trail. Visit our Trail Communities to enjoy small-town hospitality, local supper clubs, hometown bakeries, farm-to-table eateries, and sites highlighting Wisconsin's cultural heritage.

For current trail conditions, to connect with local volunteers, or to plan your Ice Age Trail hike, visit iceagetrail.org.

Sturgeon Bay's door is always open so that you can enjoy your favorite Door County anything, any day of the year! Situated on the Eastern Terminus of the Ice Age Trail, Sturgeon Bay offers a stunning coastal city with a rich history and endless opportunities for recreation.



WHERE TO HIKE

Unless otherwise noted, dogs are allowed on the Ice Age Trail and should be under control and leashed at all times.

STURGEON BAY SEGMENT

(13.7 miles)

This segment offers three widely varying experiences representative of the overall Ice Age Trail experience. The segment starts with a rail-trail hike, transitions into an urban hike through the scenic and storied City of Sturgeon Bay, then finishes with a quiet, forested trek through Potawatomi State Park*, home of the Eastern Terminus. After hiking, enjoy the beach and a picnic at the park.

FORESTVILLE SEGMENT

(9.8 miles)

This segment makes for a relaxing hike as it follows the hardpacked multiuse Ahnapee State Trail**, with benches available along the route. Keep your ears peeled for the music of birdsong, as this segment passes through an area that is part of the Great Wisconsin Birding and Nature Trail. Cross over rivers and through downtown Forestville before coming to a lovely mature hardwood forest.



*A DNR state park vehicle sticker is required to enter any Wisconsin State Park.

**The Ahnapee State Trail is a mixed-use trail. A DNR state trail pass is required if you are biking but is not required for walking/hiking.

EATS & TREATS

Stop by [Lawlss Coffee](#) or [Pinky Promise Coffee](#) to get your morning fix. Grab a fresh bite for lunch or dinner from the eclectic menu at [Bluefront Café](#). Take in the waterfront views while enjoying a hardy dinner at [Waterfront Mary's Bar and Grill](#) or [Sonny's Italian Kitchen and Pizzeria](#). Get the specialty beverage of your choice at [Starboard Brewing Company](#) or [Bridge Up Brewing](#). Play some boardgames and grab a meal at [The Gnoshery](#). Find dining near the Trail that suits your fancy at: [Kitty O'Reillys Irish Pub](#), [Get "Real" Café](#), [Scaturo's Baking Co & Café](#), [Kinara Urban Eatery](#), [Fatzo's Subs and Pizza](#), [Greystone Castle](#), and more!

SHOPS & STOPS

[Bay Shore Outfitters](#) is renowned by outdoor enthusiasts statewide and beyond for its selection of outdoor gear and goods. Stock up on sporting goods at [Dunham's Sports](#). Get something tasty at [Door County Candy LLC](#). Take a stroll on either side of the bay and peruse many fabulous shops: [On Deck Clothing Company](#), [Bliss](#), [The Pearl of Door County](#), [Logan Creek Soap](#), [Door County Dog Store/Stove Dog Bakery](#), [Dancing Bear](#), [Wilkins & Olander](#), [Bayside Bargains](#), [Madison Avenue Market](#), [Novel Bay Booksellers](#) and more!

RECREATION & RELAXATION

With so many activities available, you'll easily discover why Sturgeon Bay was designated one of the "Top 10 Happiest Seaside Towns in the U.S." by Coastal Living magazine.

Take a guided tour on the watercraft of your choice from [Sail Sturgeon Bay](#) or [Bay Shore Outfitters](#). Travel around Door County in style with a themed trolley tour from [Door County Trolley, Inc.](#) Learn about the history of Sturgeon Bay at the [Door County Maritime Museum](#) or the [Door County History Museum](#). Travel the coastline to find 3 of the 11 lighthouses of Door County. Grab a sweet souvenir picking cherries at [Robertson Orchards of Door County](#) or [Meledy Cherry Orchard](#).

For more ideas, visit: Destination Sturgeon Bay, sturgeonbay.net

STAY & PLAY

Maximize your time spent in the great outdoors, and pitch a tent at:

- [Potawatomi State Park](#)
- [Tranquil Timbers RV Resort and Campground](#)

Step right out the door and onto the Trail with these accommodations situated right on the Ice Age Trail:

- [Cliff Dwellers Resort](#)
- [Beach Harbor Resort](#)
- [Super 8 by Wyndham](#)

Or, enjoy a few creature comforts at any of the other great lodging options nearby:

- [Bridgeport Waterfront Resort](#)
- [White Lace Inn](#)
- [Stone Harbor](#)
- [The Diplomat Bed & Breakfast](#)
- [Holiday Music Motel](#)



GET INVOLVED

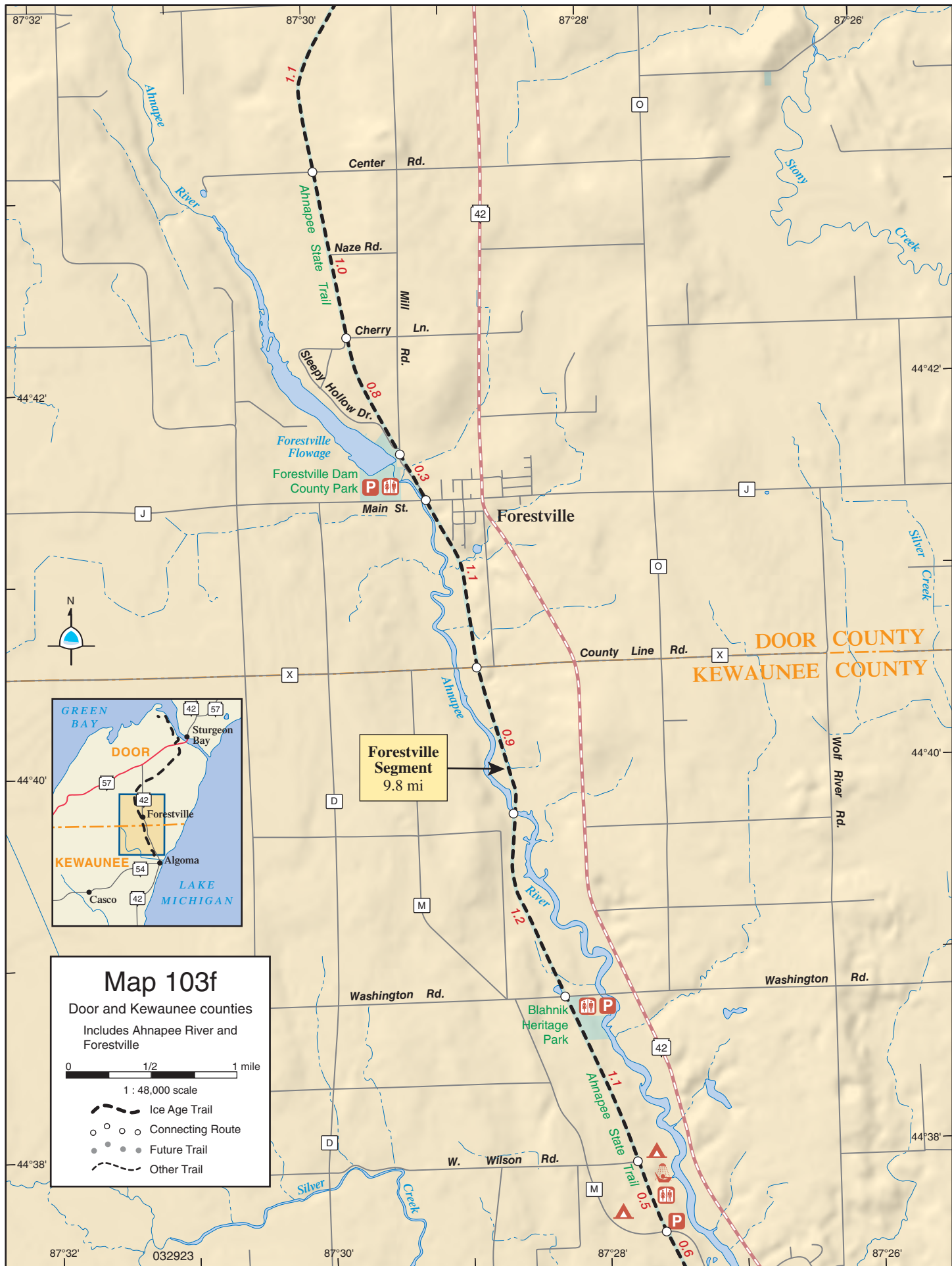
Contact the [Lakeshore Chapter](#) of the Ice Age Trail Alliance, a dedicated group of volunteers who build, maintain, and promote the beautiful segments of the Ice Age Trail in Door County.

The chapter offers three hiking award programs! Hike all segments in the Kettle Moraine State Forest for the "[Hall of Kramers](#)" patch. Earn your "[Ahnapee Tracker](#)" patch after hiking the entire Ahnapee Trail. Can't get enough? Hike all off-road segments of Door, Kewaunee, and Manitowoc counties for the "[Lakeshore Wanderer](#)" patch.



DESTINATION
STURGEON BAY
DOOR COUNTY

sturgeonbay.net

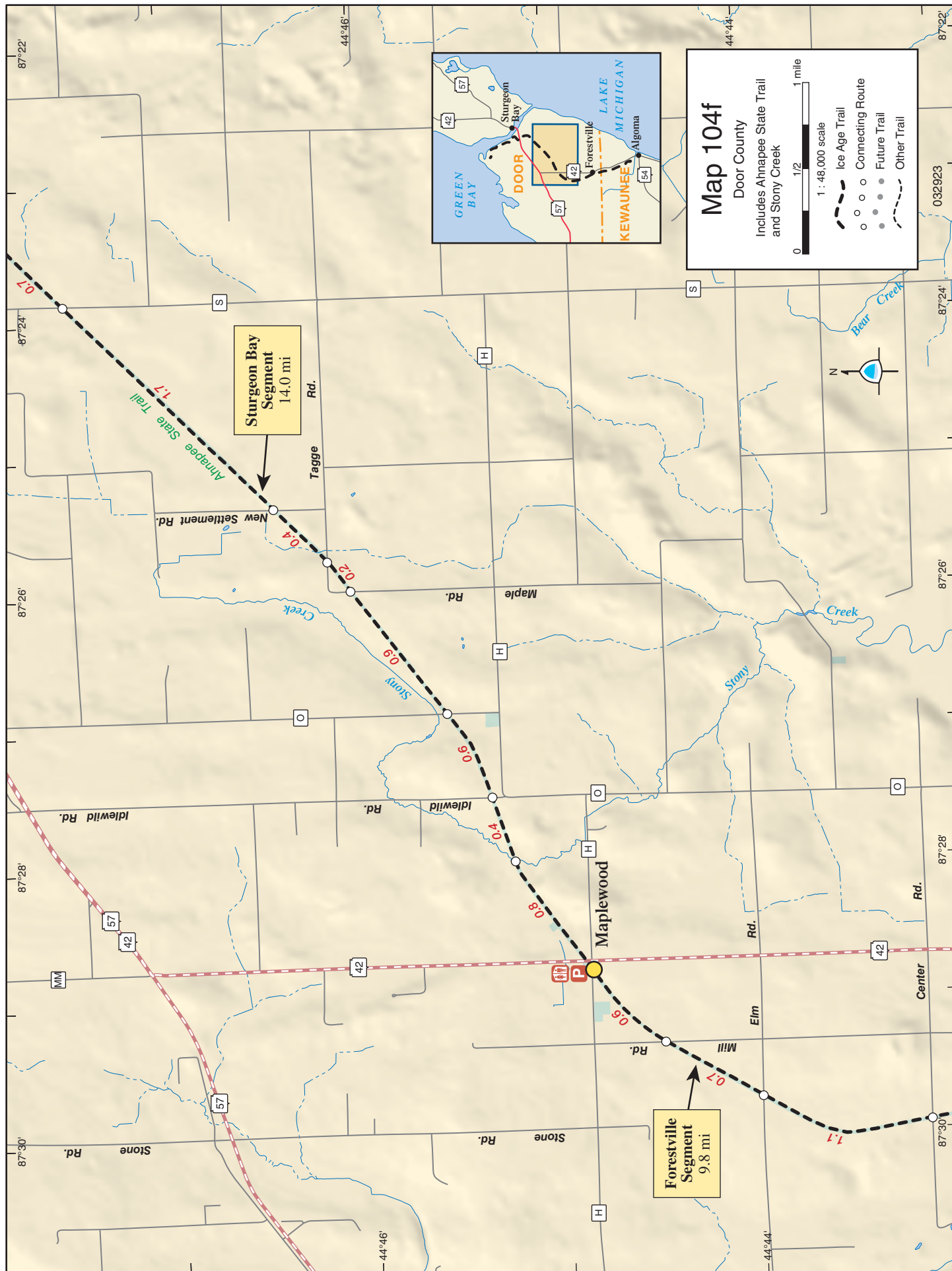


Map 103f
 Door and Kewaunee counties
 Includes Ahnapee River and Forestville

0 1/2 1 mile

1 : 48,000 scale

- Ice Age Trail
- Connecting Route
- Future Trail
- Other Trail



Map 104f
 Door County
 Includes Ahmapee State Trail
 and Stony Creek

1 : 48,000 scale
 0 1/2 1 mile

- - - Ice Age Trail
 - - - Connecting Route
 . . . Future Trail
 - - - Other Trail

Sturgeon Bay Segment
 14.0 mi

Forestville Segment
 9.8 mi

