



Together with the Ice Age Trail Alliance, Ice Age Trail Communities enhance appreciation and awareness of the natural and scenic beauty of the thousand-mile Ice Age National Scenic Trail. Visit our Trail Communities to enjoy small-town hospitality, local supper clubs, hometown bakeries, farm-to-table eateries, and sites highlighting Wisconsin's cultural heritage.

For current trail conditions, to connect with local volunteers, or to plan your Ice Age Trail hike, visit iceagetrail.org.

Nestled within the forest, lakes, prairies, and hills of the Kettle Moraine State Forest in southeastern Wisconsin, visitor's flock to **Whitewater** for its many recreational opportunities. Friendly, caring residents and shopkeepers look forward to showing you their city.



TRAVEL
WISCONSIN

WHERE TO HIKE

Unless otherwise noted, dogs are allowed on the Ice Age Trail and should be under control and leashed at all times.

CLOVER VALLEY SEGMENT

(1.6 miles)

This segment crosses the Clover Valley State Wildlife Area and features wet meadow habitat and Spring Brook. As a result, you'll experience the thrill of walking across numerous bridges and boardwalks built to protect this fragile environment.

WHITEWATER LAKE SEGMENT*

(4.6 miles)

This segment travels hilly terrain featuring wooded moraines, kettles, and outstanding views of Rice and Whitewater lakes from atop a steep rise.

BLACKHAWK SEGMENT*

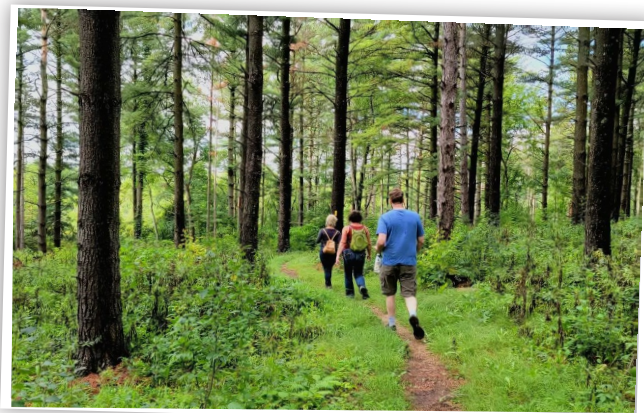
(7 miles)

This segment highlights scenic Lake La Grange, the historic Ole Oleson Homestead, and one of several popular backpacking shelters. Bring your binoculars and enjoy birding as the Trail winds through marshes, prairies, and dense forests.

BLUE SPRING LAKE SEGMENT*

(7.1 miles)

This segment features rolling hills, a panoramic view from the top of Bald Bluff (1,050 feet above sea level), and the Stone Elephant, a massive granite erratic. The segment also provides outstanding views of glacial moraines, eskers, kettles, erratics, and long views of the surrounding landscape during the leaf-off season.



**Located in the Kettle Moraine State Forest - Southern Unit. A DNR state park vehicle sticker is required to park in designated lots.*

EATS & TREATS

Begin your morning at [The SweetSpot Café](#), a premier destination for a hot breakfast, sandwiches, soups and salads, and the best coffee and specialty drinks in town.

[841 Brew House](#) and [Second Salem](#) are two brew pubs offering classic bar fare and specialty beers. If you're craving enchiladas and other flavorful, authentic Mexican fare, then head to [Cozumel Mexican Restaurant](#) on the west side or [Taco Fresco](#) downtown. Rave reviews and delicious Italian dishes are served at [Fanatico](#). Enjoy wood-fired pizza, live music and drinks at [Whiney's](#).

Satisfy your sweet tooth at [Brain Freeze](#) on the east side for some nostalgic treats or [Rosa's Pizza](#) downtown for a scoop of your favorite ice cream. Make a stop at [Avant Cycle Cafe](#) in LaGrange, a coffee house/cafe (serving alcohol) and bike shop.

SHOPS & STOPS

Browse [The Fuzzy Pig](#), a country mall and delightful day trip secret, located in a renovated barn just outside of town.

[BicycleWise & Sports Fitness](#) is your best go-to sports store for quality bicycles, bike repair, tune-ups and maintenance.

Pick up some reading material for those quiet moments at [The Book Teller](#) downtown. Stock up on groceries and supplies of all sorts at [Walgreens](#) or [Walmart](#).

HISTORY & RELAXATION

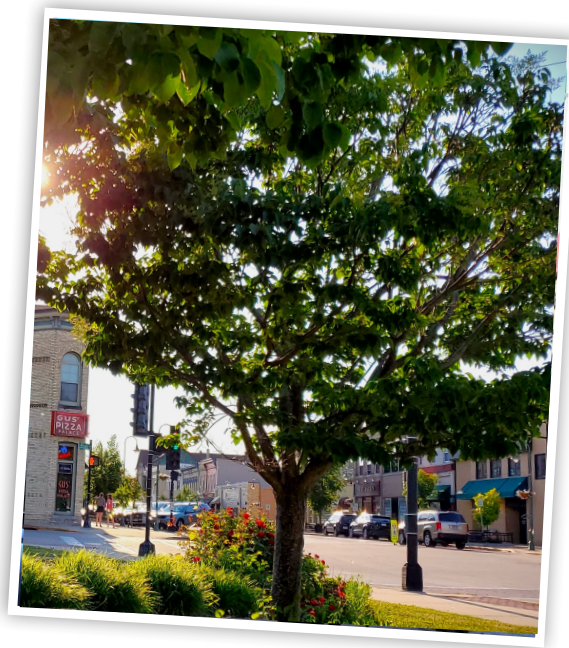
The [Whitewater Effigy Mounds Preserve](#) protects and preserves 13 Native American mounds. The preserve, listed on the National Register of Historical Places, offers a one-mile, scenic walking path for viewing the mounds. Please respect the area; American Indian mounds are considered to be burial sites. The [Whitewater Passenger Depot](#), built in 1890-91, is now home to the [Whitewater Historical Society](#) which collects, preserves and interprets the history of Whitewater and surrounding towns. Peruse fascinating displays as you learn more about this Trail Community. The [Whitewater Arts Alliance](#) offers a gallery space, displaying the works of local artists. Ponder what you learned and relax in a picturesque setting at the [Staller Estate Vineyard & Winery](#) which offers a selection of award-winning wines.

For more ideas, visit: discoverwhitewater.org

STAY & PLAY

After a day of exploration, kick off your shoes at one of these Whitewater lodging options:

- [Scenic Ridge Campground](#)
- [Whitewater Lake Campground \(DNR\)](#)
 - Open through mid-October
- [Hamilton House Bed & Breakfast](#)
- [Victoria-On-Main Bed & Breakfast](#)
- [Baymont Inn & Suites](#)
- [Fairfield Inn & Suites](#)
- [Super 8 Motel](#)

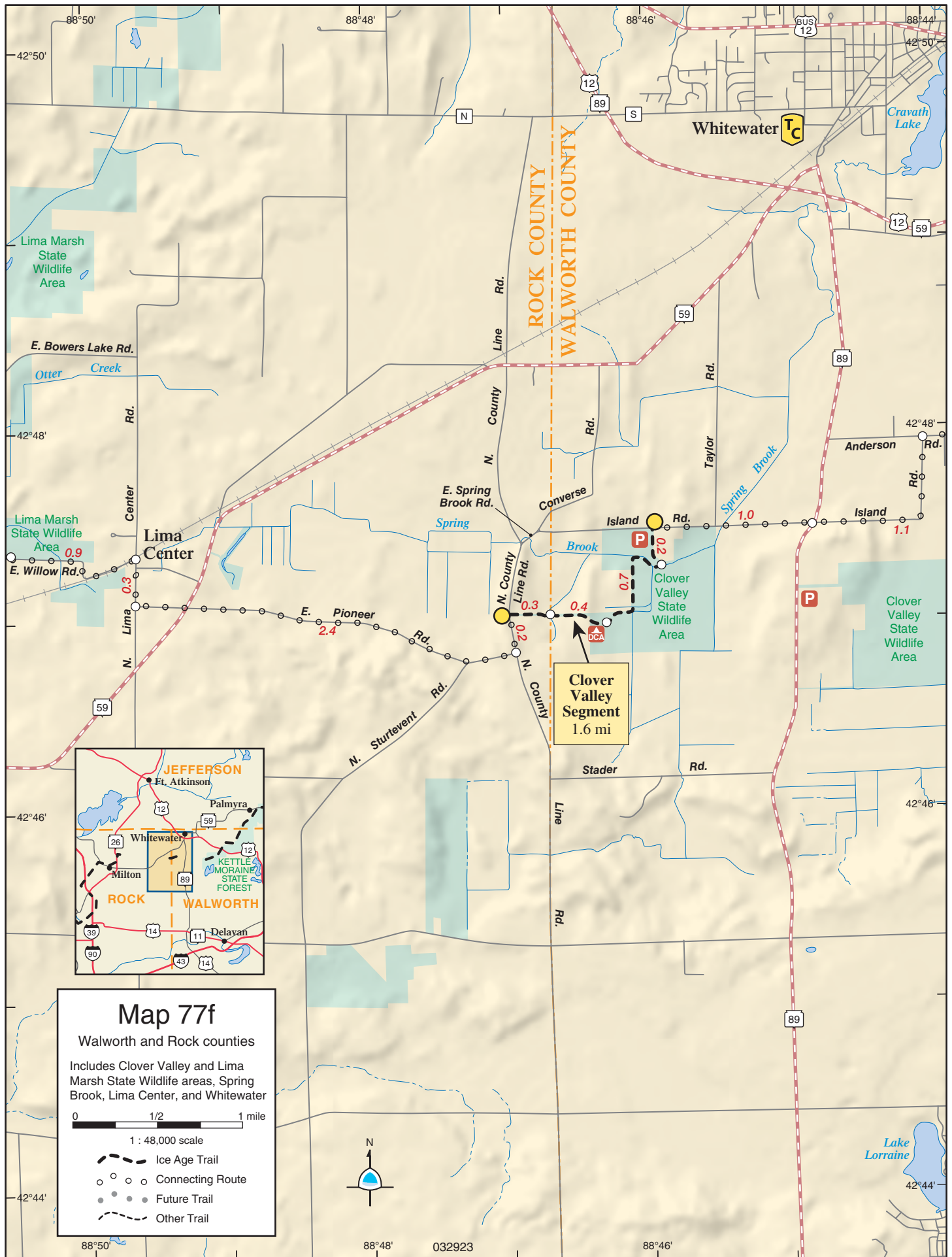


GET INVOLVED

Contact the [Walworth/Jefferson County Chapter](#) of the Ice Age Trail Alliance, a dedicated group of volunteers who build, maintain, and promote the beautiful segments of the Ice Age Trail throughout Walworth County.

The chapter's "Kettle Trekker" hiking award program recognizes those who have hiked all 26 miles of Ice Age Trail throughout Walworth County.





Map 77f

Walworth and Rock counties

Includes Clover Valley and Lima Marsh State Wildlife areas, Spring Brook, Lima Center, and Whitewater

0 1/2 1 mile

1 : 48,000 scale

- Ice Age Trail
- Connecting Route
- Future Trail
- Other Trail

